



# Technical Bulletin No. 121

**CONVERTER ACCESSORY CORP.**

201 Alpha Road, Wind Gap, PA 18091

E-Mail: [cac@epix.net](mailto:cac@epix.net) [www.converteraccessory.com](http://www.converteraccessory.com)

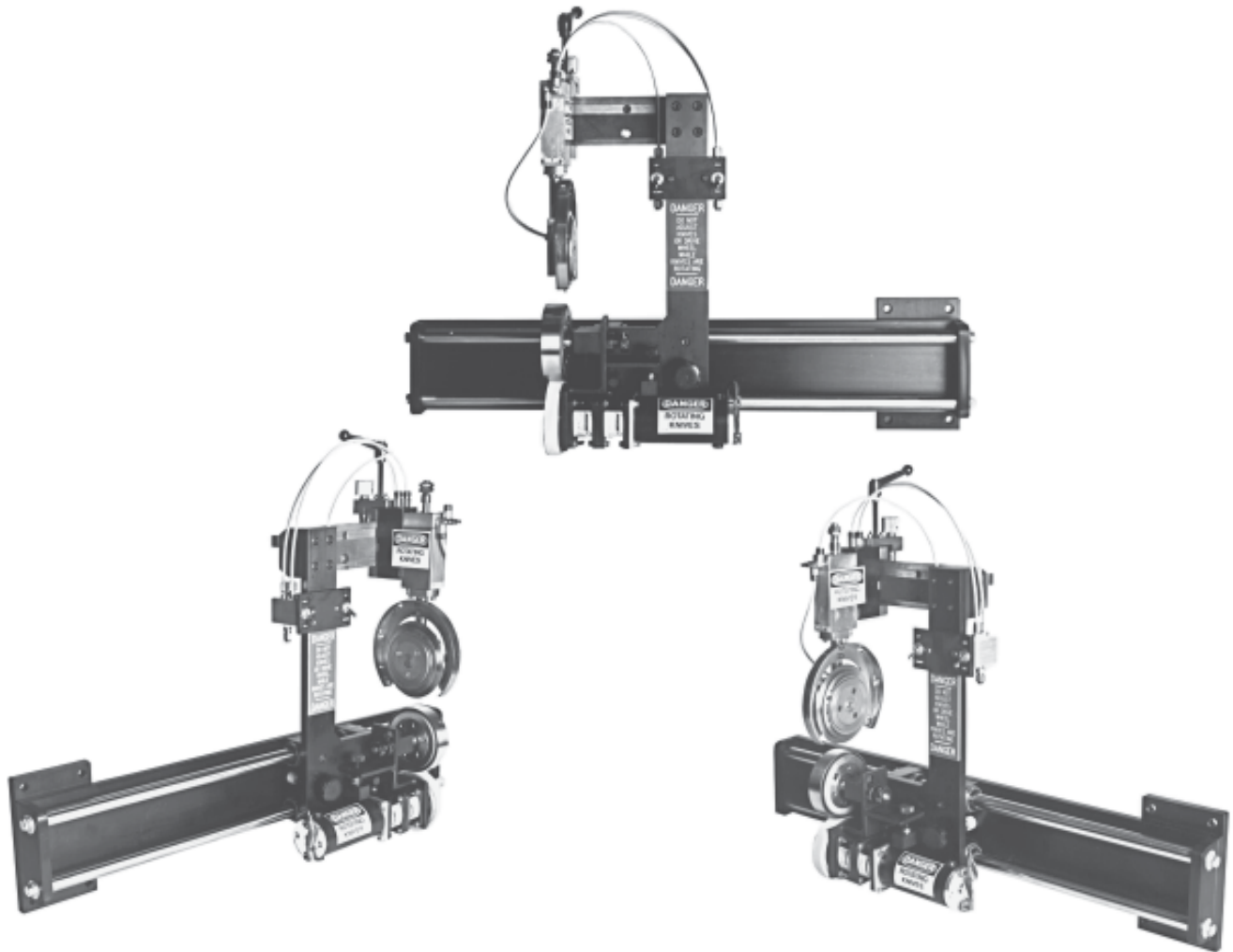
Fax 610-863-7818

**\* 800-433-2413 \***

610-863-6008

**Fax 800-709-1007**

## SHEAR CUT EDGE TRIM ASSEMBLY

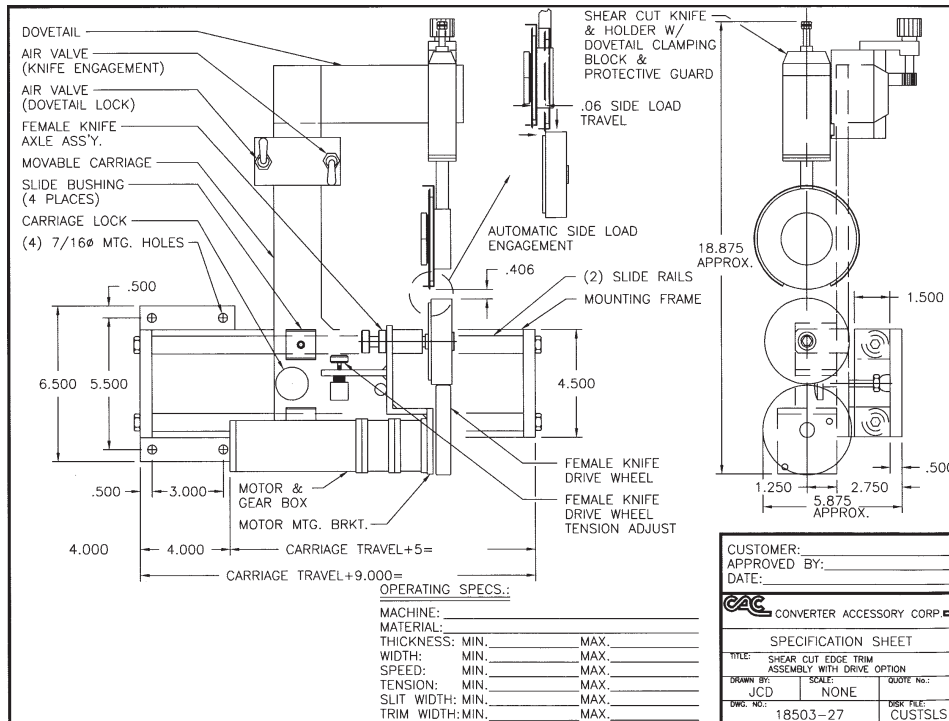
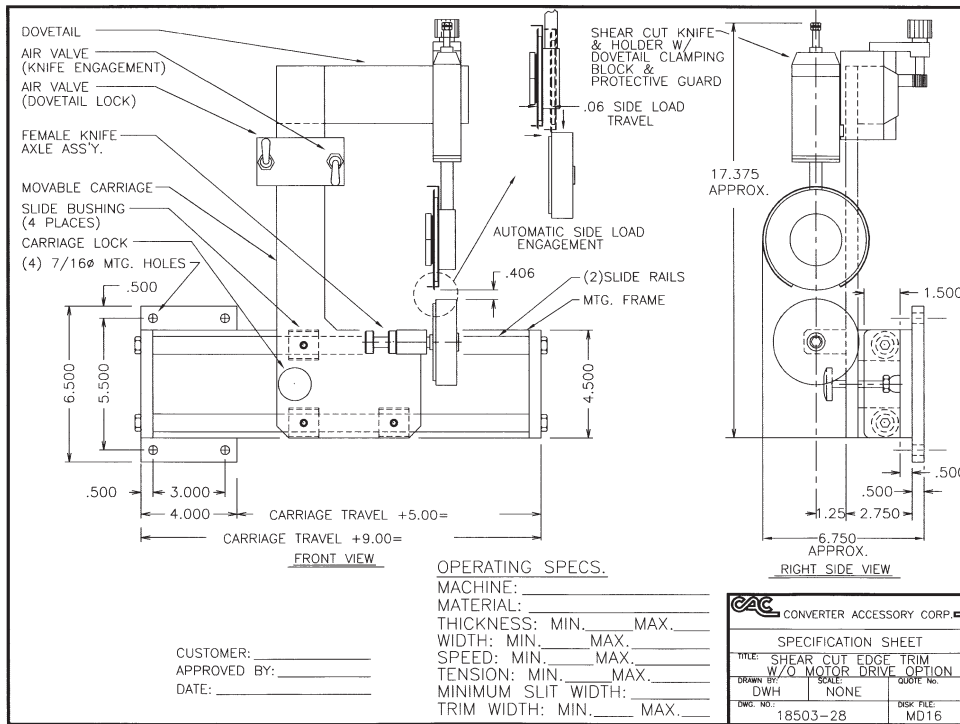


### FEATURES AND BENEFITS:

- Top and bottom blades are mounted on one assembly to provide simultaneous movement
- Top blade has automatic air operated side loading
- Bottom blade can be driven
- Used for shear cut slitting applications
- Ideal for use with all types of materials
- Compact design
- Fits in any location on existing equipment
- Easy installation - four mounting holes
- No special framework or customer modifications required
- Carriage travel can accommodate narrow to wide web width variations
- Can be used with existing trim removal system
- Integral CAC pneumatic trim removal systems are available

# SHEAR CUT EDGE TRIM ASSEMBLY

DESIGNED AND MANUFACTURED BY CAC



WEB HANDLING . . . the ONE SOURCE manufacturer.  
**CONVERTER ACCESSORY CORP.**

201 Alpha Road, Wind Gap, PA 18091-1279

www.converteraccessory.com

E-Mail: cac@epix.net

• 800-433-2413

• 610-863-6008

• FAX: 800-709-1007

• FAX: 610-863-7818

