



TECHNICAL BULLETIN NO. 200

CONVERTER ACCESSORY CORPORATION

201 Alpha Road, Wind Gap PA 18091

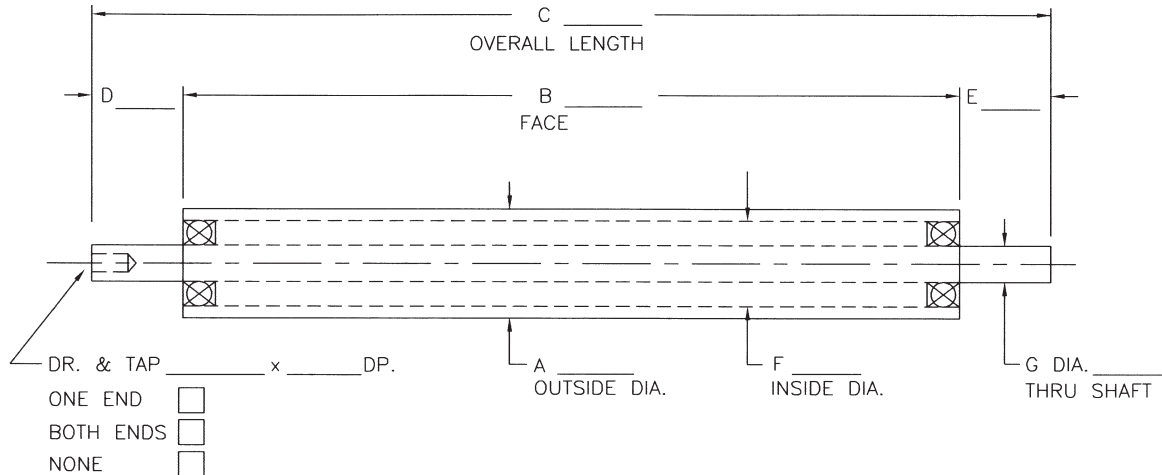
www.handleyourweb.com

E-mail: cac@epix.net

Phone: 800-433-2413 or 610-863-6008

Fax: 800-709-1007 or 610-863-7818

STANDARD ALUMINUM IDLER ROLLS



MOUNTING BLOCKS:

FLANGE MOUNT

FOOT MOUNT

NONE

CONSTRUCT FOR USE AS:

DEAD SHAFT IDLER (WITH BEARINGS)

LIVE SHAFT IDLER (WITH HEADERS)

= BEARINGS OR HEADERS

MATERIAL:

ALUMINUM

STEEL

ROLL FACE COVERING: _____

MATERIAL	ALUMINUM (ALU)									STEEL (STL)					
	2	2.5	3	3.5	4	4.5	5	6	8	2.5	3	3.5	4	5	6
ROLL DIAMETER	2	2.5	3	3.5	4	4.5	5	6	8	2.5	3	3.5	4	5	6
SHAFT DIAMETER	.75	1	1	1.5	1.5	1.5	1.5	1.5	2	1	1	1.25	1.5	2	2
WALL THICKNESS	.25	.25	.5	.5	.5	.5	.5	.5	.5	.25	.187	.187	.25	.312	.375

ALL DIMENSIONS IN INCHES

FEATURES:

- O.D. Turned and Polished
- Concentricity within .003"

- Low Friction Bearings Standard
- Super Low Friction Bearings Available (no seals, light oil lube)

Quote and Ordering Information on Reverse Side

*May vary for large roll diameters and long face lengths (please contact us for more information)

TO PLACE AN ORDER OR RECEIVE A QUOTE PLEASE FILL IN THE INFORMATION BELOW
AND FAX THIS PAGE TO **800-709-1007**

CAC WILL SEND A RETURN FAX WITH APPLICABLE PRICES FILLED IN.

STANDARD:

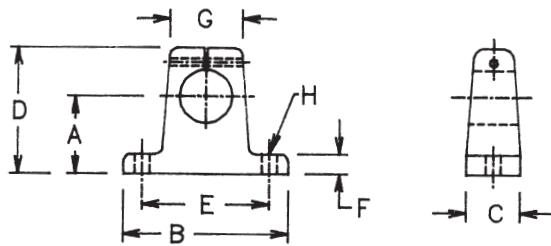
QTY.	"A" DIM.	"B" DIM.	"C" DIM.	MAT'L (ALU OR STL)	MTG. BLOCK TYPE	PRICE
_____	_____	_____	_____	_____	_____	_____
_____	_____	_____	_____	_____	_____	_____
_____	_____	_____	_____	_____	_____	_____
_____	_____	_____	_____	_____	_____	_____
_____	_____	_____	_____	_____	_____	_____

OR

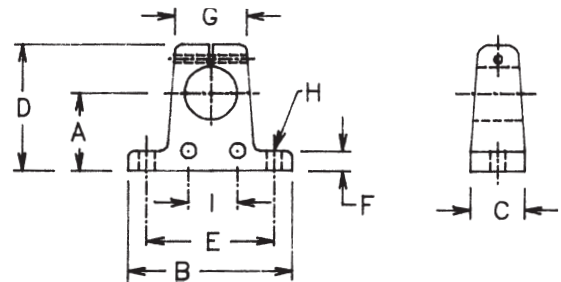
SPECIAL: Sketch Roll with Machining Operation, etc. Below.

MTG. BLOCK Y N

PRICE _____



FOOT MTG. BLOCK



FLANGE MTG. BLOCK

SHAFT	A	B	C	D	E	F	G	H "BOLT"	H "HOLE"	I	WT. (LBS.)
3/4"	1-1/4"	2-3/4"	3/4"	2-1/8"	2"	5/16"	1"	#10	7/32"	1"	.5
1"	1-1/2"	3-1/4"	1"	2-9/16"	2-1/2"	3/8"	1-3/8"	1/4"	9/32"	1"	1.0
1-1/4"	1-3/4"	4"	1-1/8"	3"	3"	7/16"	1-3/4"	5/16"	11/32"	1	2.0
1-1/2"	2"	4-3/4"	1-1/4"	3-1/2"	3-1/2"	1/2"	2"	5/16"	11/32"	1-1/2"	2.6
2"	2-1/2"	6"	1-1/2"	4-1/2"	4-1/2"	5/8"	2-5/8"	3/8"	13/32"	2-1/2"	4.8



**Web Handling Technology...
CAC Engineered & Manufactured
CONVERTER ACCESSORY CORPORATION**

201 Alpha Road, Wind Gap PA 18091
www.handleyourweb.com E-Mail: cac@epix.net
 Phone: 800-433-2413 or 610-863-6008
 Fax: 800-709-1007 or 610-863-7818